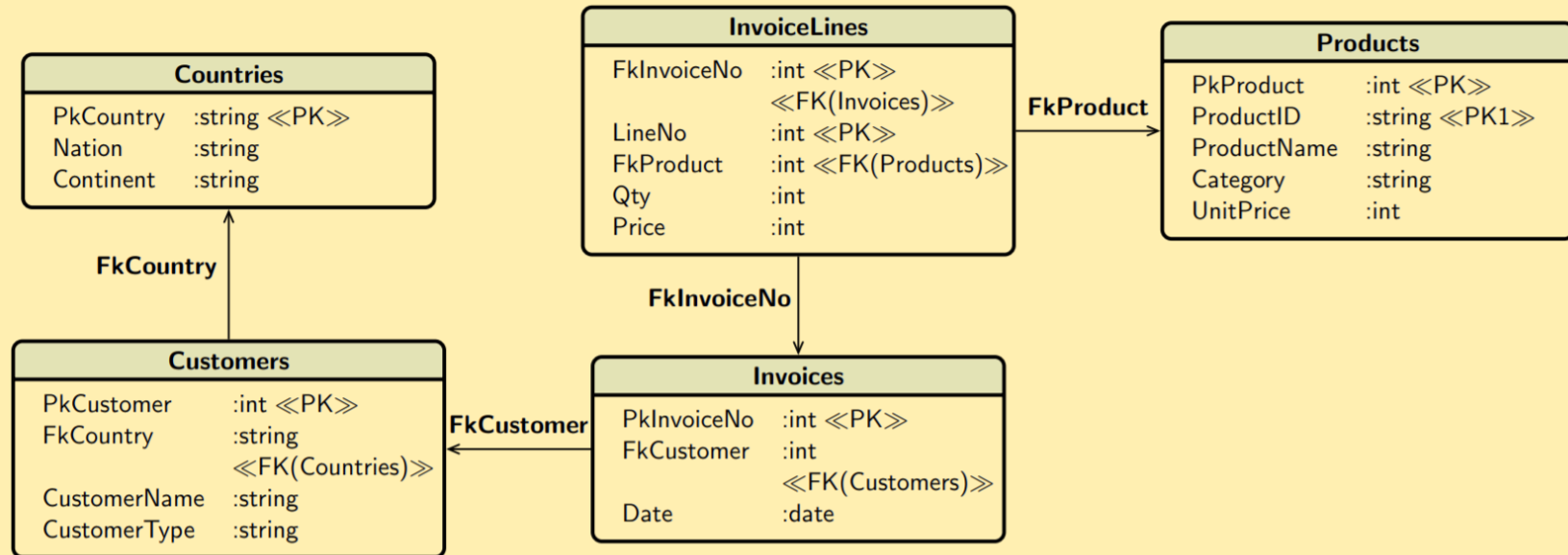


Physical Query Plans in JRS (see 2020-13.sql)

- Using JRS on the database TestStar, check the Physical Query Plans for SQL queries:



- Number of distinct Customers by Product
- Largest invoice revenue by Product
- The percentage of revenue generated by the product over the total revenue of the customer by Customer and Product
- Total revenue by Customer but only if Customer has bought FkProduct=7 at least once