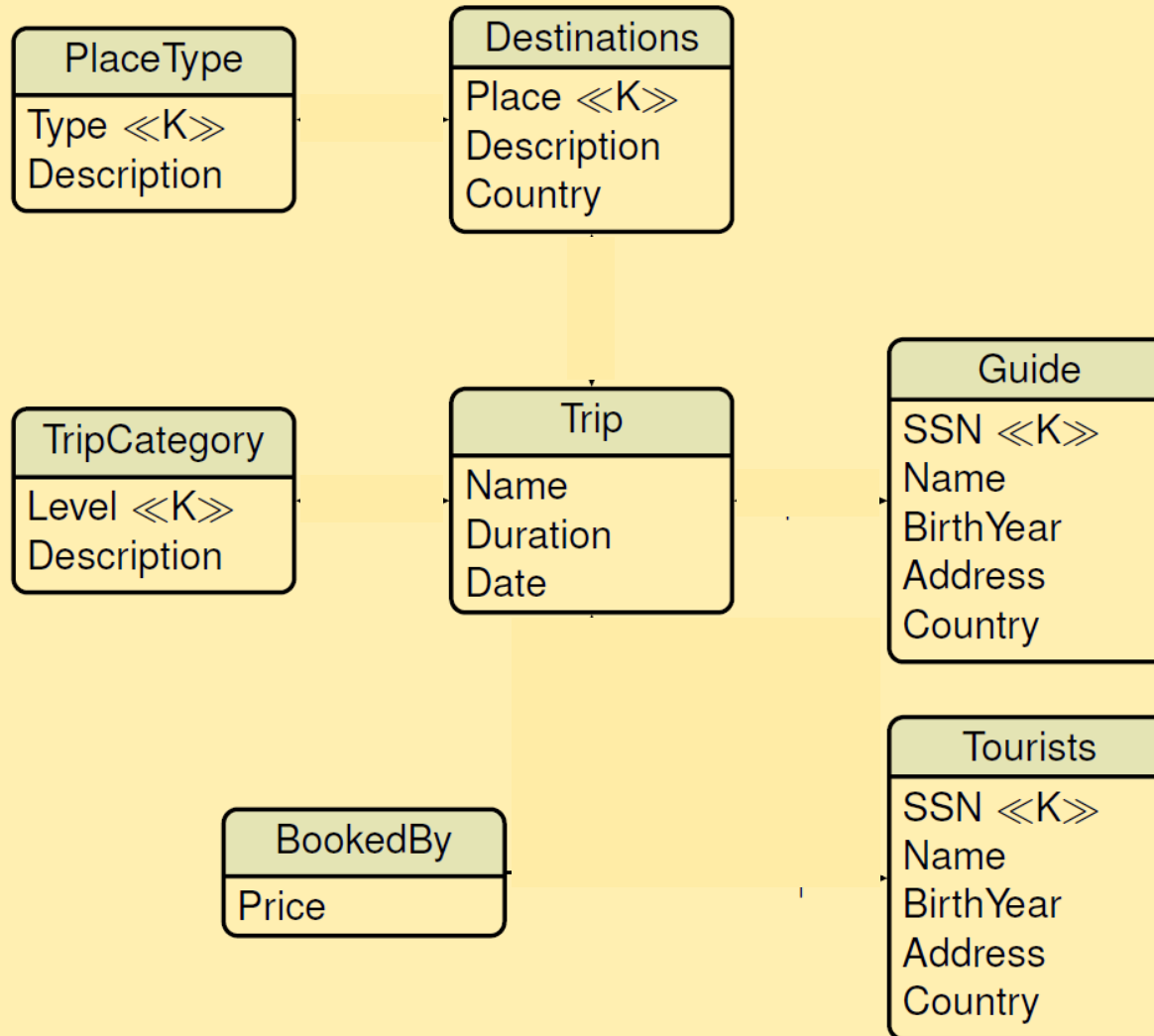


Assignment I

TRAVEL AGENCY Operational DB - Complete the schema!



- A **train** has a unique number and a driver. Trains are either **local** or **express**, but never both. A **station** has a unique name and an address. Stations are either **main** or **secondary**, but never both. Local trains stop at all stations. Express trains stop only at the main stations. Each **stop** of a train in a station has a duration time.
 - Design an ODM schema for the database.